

ELEVATE  
EDITION

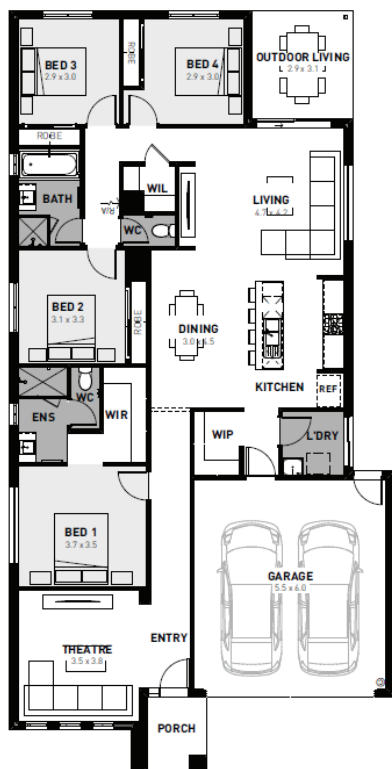


Fixed price package

**\$618,700\***

## Lismore 23<sup>^</sup>

 4  2  2



Carrigum Winter Valley - 400m<sup>2</sup>

929 Cruz Circuit

- Fixed site costs
- Exposed aggregate driveway
- Celine facade included
- Quality floor coverings throughout
- 2550mm high ceilings to ground floor
- 20mm category one Caesarstone benchtops to Kitchen, Bath and Ensuite
- Westinghouse 900mm wide stainless-steel oven, cooktop and slide out rangehood
- Laminate overhead cupboards to Kitchen
- 400mm X 600mm niche to showers
- Up to thirty 8w LED downlights to Entry, Kitchen, Dining, Living and Bedrooms
- Five additional double power points, one additional TV Point and additional Data point
- Roller blockout blinds (excluding wet areas and

 **Homebuyers  
Centre**

**Rick Armitage 0493 362 988**  
[rick@homebuyers.com.au](mailto:rick@homebuyers.com.au)

Price based on home type and floor plan shown and on builder's preferred siting. Floor plan depicts a traditional facade, modern facade shown and included in price. Image used is an artist impression for illustrative purposes only and may show decorative items not included in the price shown including path, fencing, landscaping, coach lights and furnishings. 'Fixed' pricing means that, subject to the terms of this disclaimer and any owner requested changes, the price advertised will be the price contained in the building contract entered into and this price will not change other than in accordance with the building contract. The price is based on developer supplied engineering plans and plans of subdivision and final pricing may vary if actual site conditions differ to those shown in these developer supplied documents. Block and building dimensions may vary from the illustration and the details shown. For more information on the pricing and specification of this home please contact a New Homes Consultant. ABN Group Victoria has permission of the owner of the land to advertise the land as part of the price specified. The price does not include transfer duty, settlement costs, community infrastructure levies imposed or any other fees or disbursements associated with the settlement of the land.