



# FIXED PRICE HOME AND LAND

Images shown are for illustrative purposes only and may not represent the final product such as lighting, window furnishings, timber look garage door & timber windows. Façade details including entry door and window sizing may vary between house types. Pricing also excludes features such as fencing, landscaping, letterbox, decking, driveway and any notable features of the façade. Please speak with your sales consultant for further details.

LOT 916, Carrington Estate, Winter Valley (448M2)

FLOOR PLAN: Sage 24\_224  
FACADE: Amber

# \$501,733

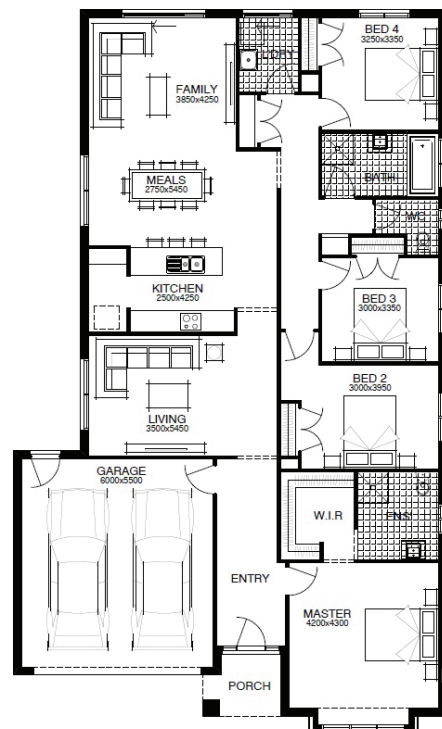
4 🚗 2 🌧️ 2 🚗 2 🛏️ 24sq 📏

FIRST HOME OWNERS PRICE \$481,733

**WELLNESS LIVES HERE**  
*You should too.*

## PACKAGE INCLUSIONS:

- ▶ LIFETIME STRUCTURAL GUARANTEE
- ▶ DEVELOPER & COUNCIL REQ'S
- ▶ 450MM EAVES TO FACADE
- ▶ KEYED WINDOW LOCKS TO ALL OPENABLE WINDOWS
- ▶ 3 COAT PAINT APPLICATION
- ▶ SECTIONAL LIFT GARAGE DOOR
- ▶ TILED SHOWER BASE
- ▶ FINANCE SOLUTIONS AVAILABLE
- ▶ ... AND MUCH MORE!



For enquiries please contact:  
Kristy Steinman  
0422918488  
simondsxpress.com.au

BALLARAT VIC 3350  
Ballarat  
kristy.steinman@simonds.com.au

