



Journey INTO STYLE | 2021  
**EMBARK  
UPGRADES**



# HOME AND LAND

Images shown are for illustrative purposes only and may not represent the final product such as lighting, window furnishings, timber look garage door & timber windows. Façade details including entry door and window sizing may vary between house types. Pricing also excludes features such as fencing, landscaping, letterbox, decking, driveway and any notable features of the façade. Please speak with your sales consultant for further details.

LOT 916, CARRINGUM ESTATE, WINTER VALLEY (448M2)

FLOOR PLAN: BULLER 26\_248  
FACADE: MAWSON

**FIXED PRICE**

**\$553,633**

FIRST HOME OWNERS PRICE \$533,633

4 🚗 2 🍷 2 🚗 2 🚗 26sq 📏

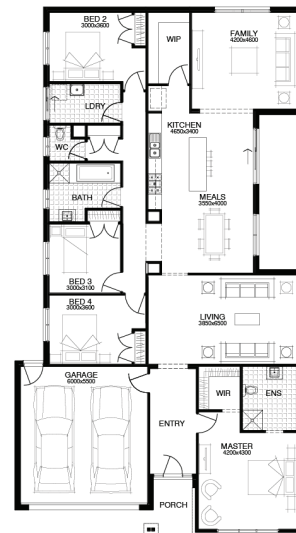
ADD A TOUCH OF LUXURY TO YOUR HOME TODAY & SAVE!



**Journey**  
INTO STYLE | 2021  
SAVE ON  
LUXURY

## PACKAGE INCLUSIONS:

- ▼ DEVELOPER & COUNCIL REQs
- ▼ FLOORING THROUGHOUT
- ▼ 20MM CAESARSTONE BENCHTOP TO KITCHEN
- ▼ OVERHEAD CUPBOARDS TO KITCHEN
- ▼ 20 DOWNLIGHTS
- ▼ BRICKWORK OVER WINDOWS
- ▼ COLOURED CONCRETE DRIVEWAY UP TO 40M2
- ▼ REMOTE TO GARAGE DOOR
- ▼ NBN PROVISIONS (EXCLUDES HUB)
- ▼ TOWEL RAILS & TOILET ROLL HOLDERS



**For enquiries please contact:**

Kristy Steinman  
0422918488  
Simonds.com.au

Ballarat

BALLARAT VIC 3350  
kristy.steinman@simonds.com.au

**CARRINGUM**  
BALLARAT