

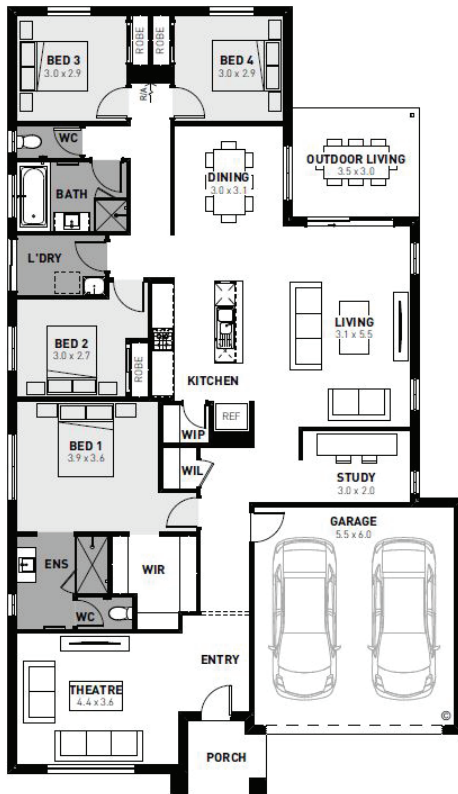
**FIXED  
PRICE  
PACKAGE**

# WILLOW 25 GO



 **\$534,800**

 **4**  **2**  **2**



**Carrington, Winter Valley**

Lot 916 Anglesea Road - 448m<sup>2</sup>



## SPECIAL FEATURES

- Fixed site costs
- All developer & council requirements
- Brick infills over windows
- Gas ducted heating
- Stainless steel appliances
- Vinyl sliders to robes
- Tiled shower bases
- 25 year structural guarantee
- 12 month service warranty
- 6 star energy rating
- Smart control garage door with camera & app security
- Water Tank 2000L

**Rick Armitage**

rick@homebuyers.com.au

0490 392 880



**Homebuyers  
Centre**  
COACHING YOU TO OWN IT

131 751 | **HOMEBUYERS.COM.AU**

\*Price based on home type and floor plan shown and on builder's preferred siting. Floor plan depicts a traditional facade, modern facade shown and included in price. Façade images should be used as a guide and depicts an artist impression for illustrative purposes only and may show decorative items not included in the price shown including path, fencing, landscaping, coach lights, furnishings and design elements e.g. front door with side light not included. 'Fixed' pricing means that, subject to the terms of this disclaimer and any owner requested changes, the price advertised will be the price contained in the building contract entered into and this price will not change other than in accordance with the building contract. The price is based on developer supplied engineering plans and plans of subdivision and final pricing may vary if actual site conditions differ to those shown in these developer supplied documents block and building dimensions may vary from the illustration and the details shown. For more information on the pricing and specifications for full extent of inclusions and features of this home please contact a New Homes Consultant. ABN Group Victoria has permission of the owner of the land to advertise the land as part of the price specified. The price does not include transfer duty, settlement costs, community infrastructure levies imposed or any other fees or disbursements associated with the settlement of the land (Sep 2020).